

# BRANDMODELS

## GARY ALLEGRETTO

HAIR: A LITTLE GRAY

EYES: BROWN

HEIGHT: 6' 1"

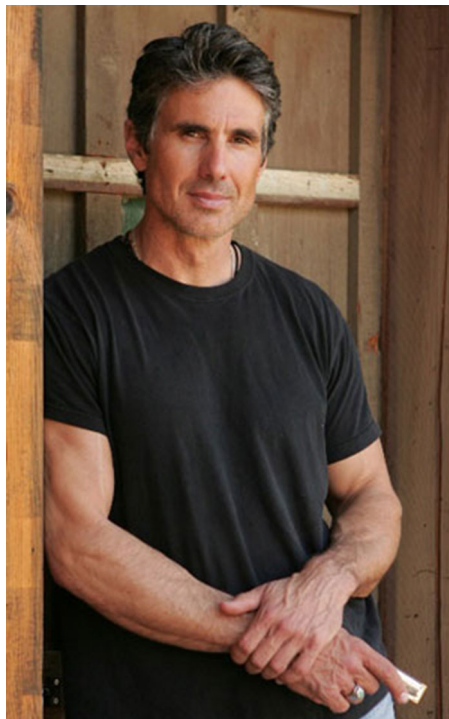
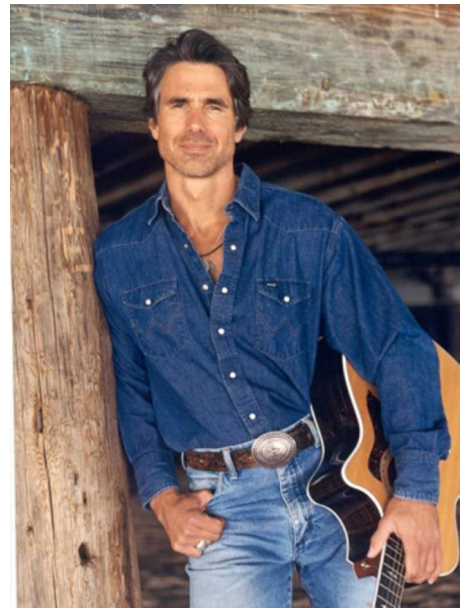
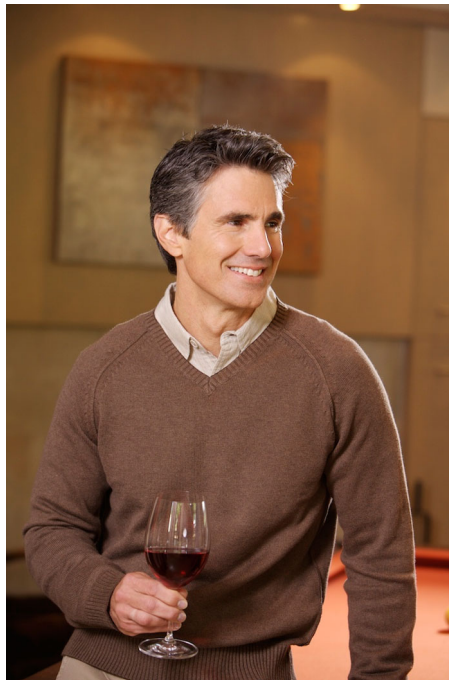
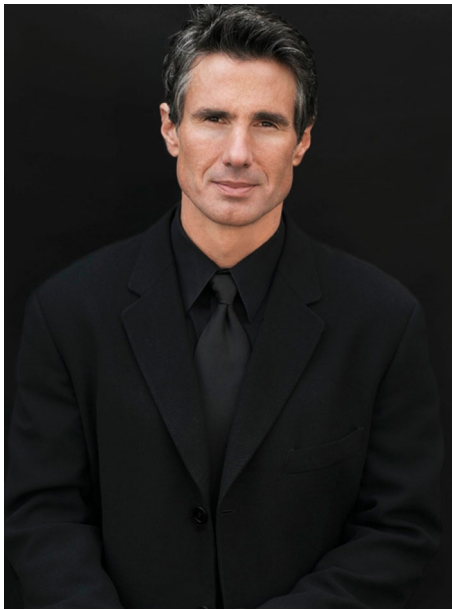
INSEAM: 34

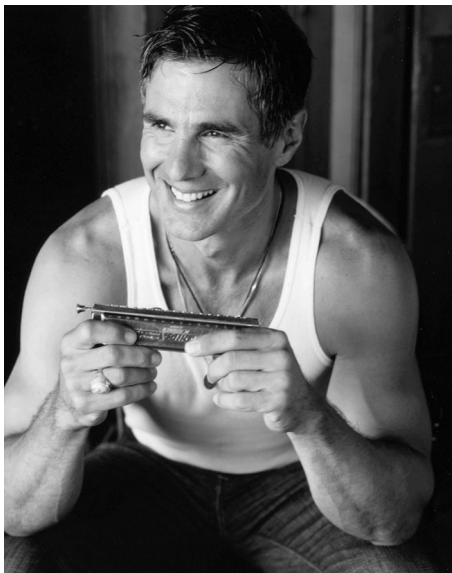
WAIST: 32

SHIRT: 16/34

SUIT: 42R

SHOE: 11.5





**WHY RIDE:** I wanted a motorcycle ever since I was a little kid and saw Steve McQueen in *The Great Escape*, jumping the fence on his Triumph. I'll never forget the feeling when I first got on one. I still get it now, every time.

**FAVORITE PLACE TO RIDE:** I like fire roads, and that goes back to my days in a forest ranger. I have a Honda XR600E, that I take up to the Sierra, loaded with camping gear. It's also used if I find a great stream, and get up camp. You can get places you can't find over on.

**FAVORITE BIKIE TRIP:** I once rode all over Baja, carrying a surfboard in a rack.

**Admittedly, I own a white Ducati Superleggera, but I love the Street Triple. It's the best of both worlds. It's got 201 horsepower and a top speed of 184 MPH. It's the best I've ever ridden. It's got 201 horsepower and a top speed of 184 MPH. It's the best I've ever ridden.**

