

# BRANDMODELS

## BETHANIE JEAN

HAIR: BLONDE

EYES: GREEN

HEIGHT: 5' 5"

CHEST: 32

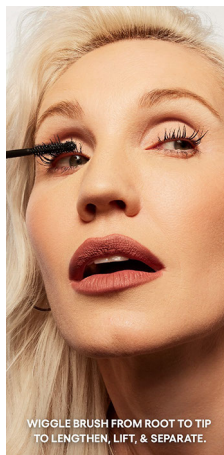
WAIST: 25

HIPS: 35

DRESS: 2

SHOE: 7





WIGGLE BRUSH FROM ROOT TO TIP TO LENGTHEN, LIFT, & SEPARATE.

USE TIP TO GRAB & EXTEND LASHES FROM ANY ANGLE.

