

BRANDMODELS

NATALIE FABRY

HAIR: BLONDE

EYES: GREEN

HEIGHT: 5' 8"

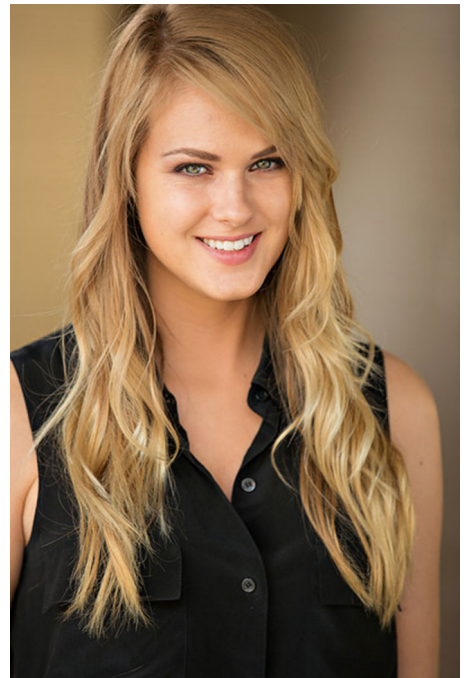
CHEST: 34C

WAIST: 25

HIPS: 35

DRESS: 4/6

SHOE: 8.5







Sunset
 | SPIRITRY |
 SHORT NECKLACE, INTERWAVING MULTIPLE STRANDS OF BEADS. AVAILABLE IN MINT/LIGHT GREEN AND ORANGE/TURQUOISE.

Pompano
 | SPIRITRY |
 Dainty BRACELET OF GOLD ACCENT BEADS WITH ENGRAVED CIRCULAR PINE. AVAILABLE IN MINT/ORANGE AND LAVENDER/GREEN.

Although Bangs
 | SPIRITRY |
 PHOTO AND BRACELET MADE ON WIRE SOLD INDIVIDUALLY. AVAILABLE IN GREEN/MINT, TURQUOISE AND PINK/PEACH.

Orchid Loop
 | SPIRITRY |
 THREE STRANDS OF GOLD ACCENT BEADS ADORNED WITH RINGS OF GOLD DRUSE BEADS. AVAILABLE IN TURQUOISE/PEACH.

31.25 - Spring 2012 / page twenty one



Paint the Town Pink
 | SPIRITRY |
 SHORT NECKLACE, INTERWAVING MULTIPLE STRANDS OF BEADS. AVAILABLE IN MINT/LIGHT GREEN AND ORANGE/TURQUOISE.

Pompano
 | SPIRITRY |
 Dainty BRACELET OF GOLD ACCENT BEADS WITH ENGRAVED CIRCULAR PINE. AVAILABLE IN MINT/ORANGE AND LAVENDER/GREEN.

Although Bangs
 | SPIRITRY |
 PHOTO AND BRACELET MADE ON WIRE SOLD INDIVIDUALLY. AVAILABLE IN GREEN/MINT, TURQUOISE AND PINK/PEACH.

Orchid Loop
 | SPIRITRY |
 THREE STRANDS OF GOLD ACCENT BEADS ADORNED WITH RINGS OF GOLD DRUSE BEADS. AVAILABLE IN TURQUOISE/PEACH.

31.25 - Spring 2012 / page twenty one

Paint the Town Pink



