

# BRANDMODELS

## ALEX BOLDEA

HAIR: WHITE/GRAY

EYES: GREEN

HEIGHT: 5' 8"

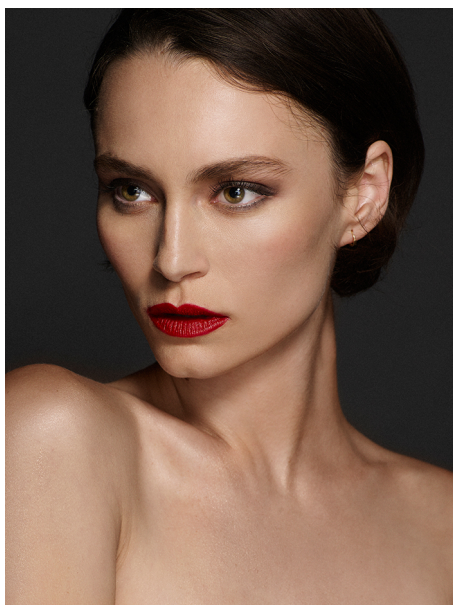
CHEST: 32

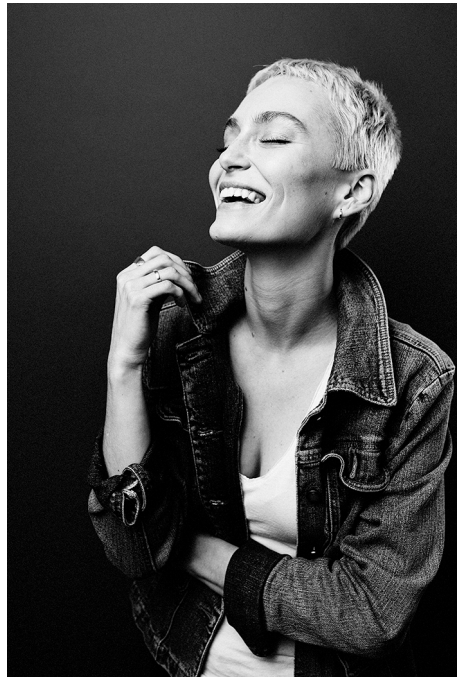
WAIST: 25.5

HIPS: 36

DRESS: 2

SHOE: 7.5







**SNAP DECISIONS: A PARTY NEXT WEEKEND!**  
Should you have the pleasure of the experts, so they'll practically be guests at their own party. The late-year solution is Nick Oberman, Director of Education and the go-to person for all luxury events and parties. He also has training in determining the level of hospitality or quality assurance. Don't like the dinner? He'll personally get you another one. Need a VIP guest list? A wedding professional? A venue for 2,000 guests? His team of multiple executives has you covered.  
Sill dress with crystals and metal rings with crystals.  
@oberman'sworld, his own.