

BRANDMODELS

BRIDGHAM

HAIR: LIGHT BROWN

EYES: BLUE/GREEN

HEIGHT: 5' 9"

CHEST: 32B

WAIST: 24

HIPS: 35

DRESS: 2/4

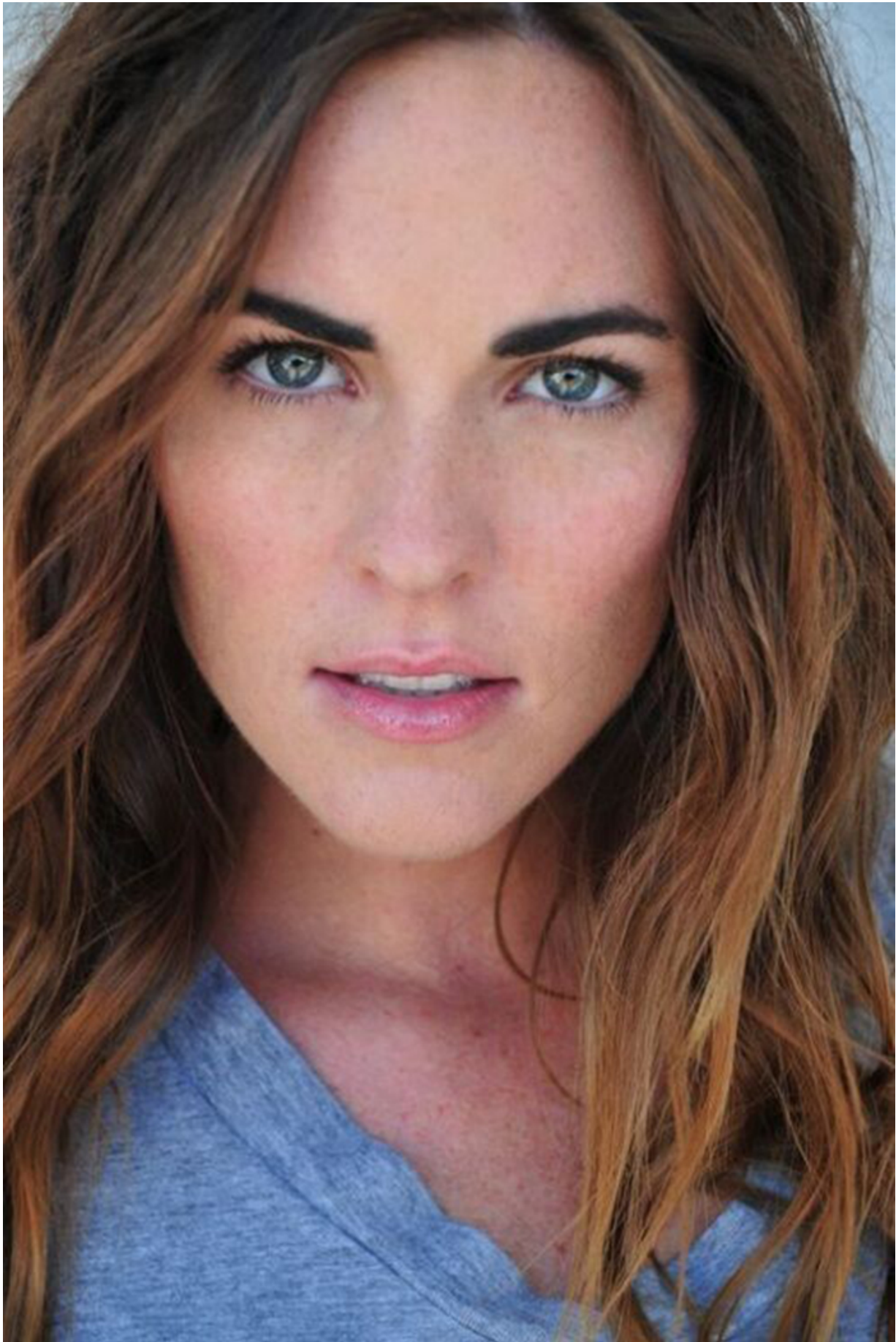
SHOE: 8.5





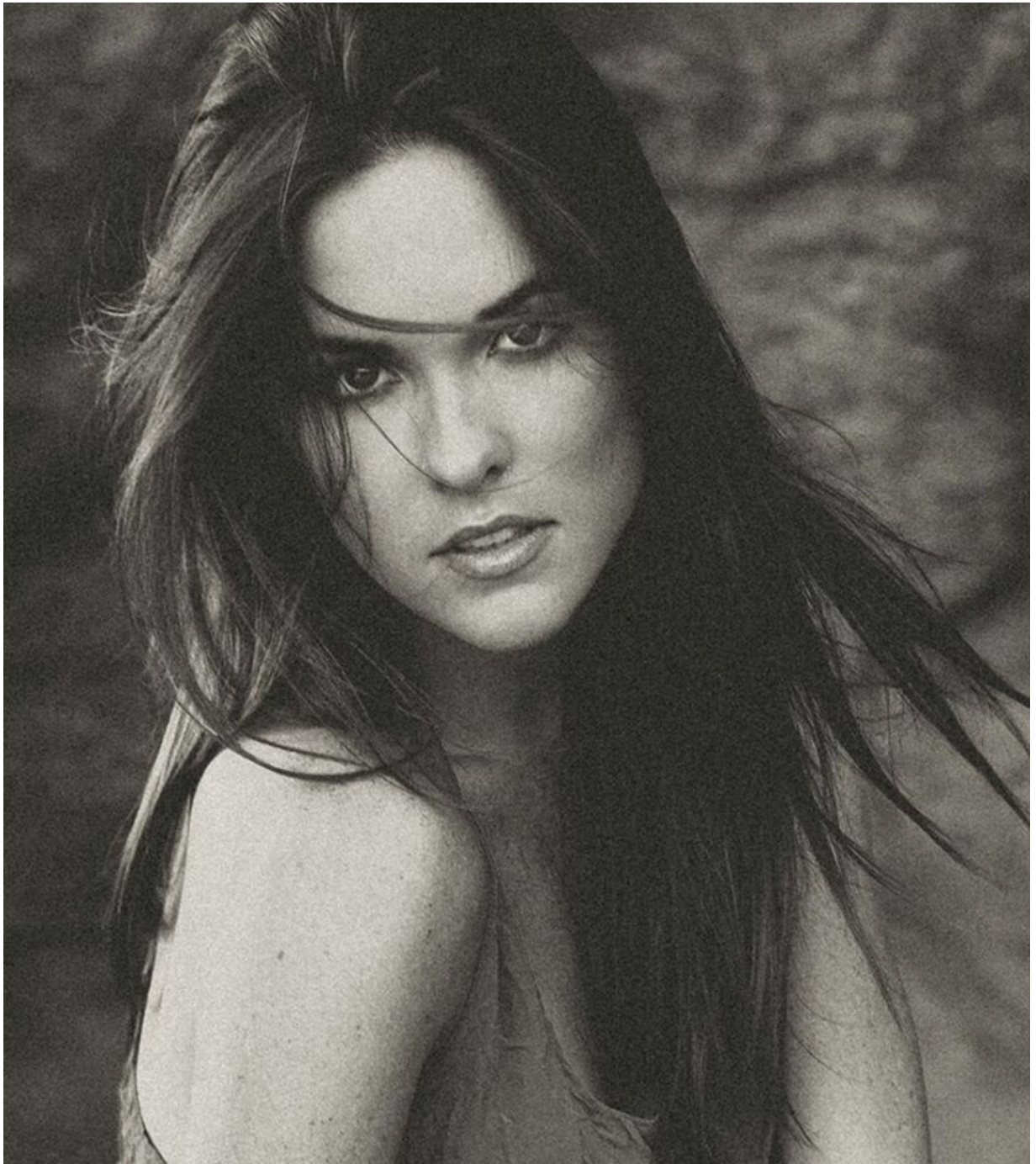






































Bridgham wears a poppy red jumpsuit with cutout detail by Dakota (\$94) from Violet Clover, Winter Park. Her long grey multistrand moonstone necklace with red macramé (\$584), ruby quartz drop earrings in 18-karat gold over silver (\$428), and adjustable druzy ring (\$490) are all from Coralia Lee's Boutique, Winter Park. Her silver metallic ankle strap pumps (\$775) are from the Jimmy Choo Boutique, Mall at Millenia.

Bridgham wears a tuxedo low-cut long-sleeve blouse by Rachel Zoe (\$325), a black and white print coat by Trina Turk (\$548), and black and white stripe strappy sandals by Vince Camuto (\$275), all from Turti, Winter Park. Her black and white pinstripe shorts by C/MEO Collective (\$139) are from Charyl, Winter Park. Her horn bangles (\$199 each), tribal black feather statement necklace (\$249), horn ring with diamond detail (\$710), and hammered gold and silver cascade earrings (\$375) are all by Coralia Leets Boutique, Winter Park.

Empire for Love





















Bridgham

Photographs by MICHAEL ILOBA
MODEL: BRIDGHAM LEIGH @ NTA MODELS
HAIR STYLIST: AUÐUR SIF JONSDÓTTIR
MAKEUP DONE USING MAC COSMETICS
ART DIRECTOR: AUÐUR SIF JONSDÓTTIR











