

# BRANDMODELS

## KORI AGEE - FITNESS

HAIR: BROWN

EYES: BROWN

HEIGHT: 5' 8"

CHEST: 34

WAIST: 25

HIPS: 34

DRESS: 2

SHOE: 7







**1. BRITTANY MOTION STANDOUT SPORTS BRA - AB0013**

High Intensity

Thin webbed straps at back. Thick straps at front. Leopard print for style. Marl gray fabric for balance. Soft gray lining. Removable padded cups. Motion reflective logo on side.

Fabric 1:  
87% POLYESTER  
13% SPANDEX

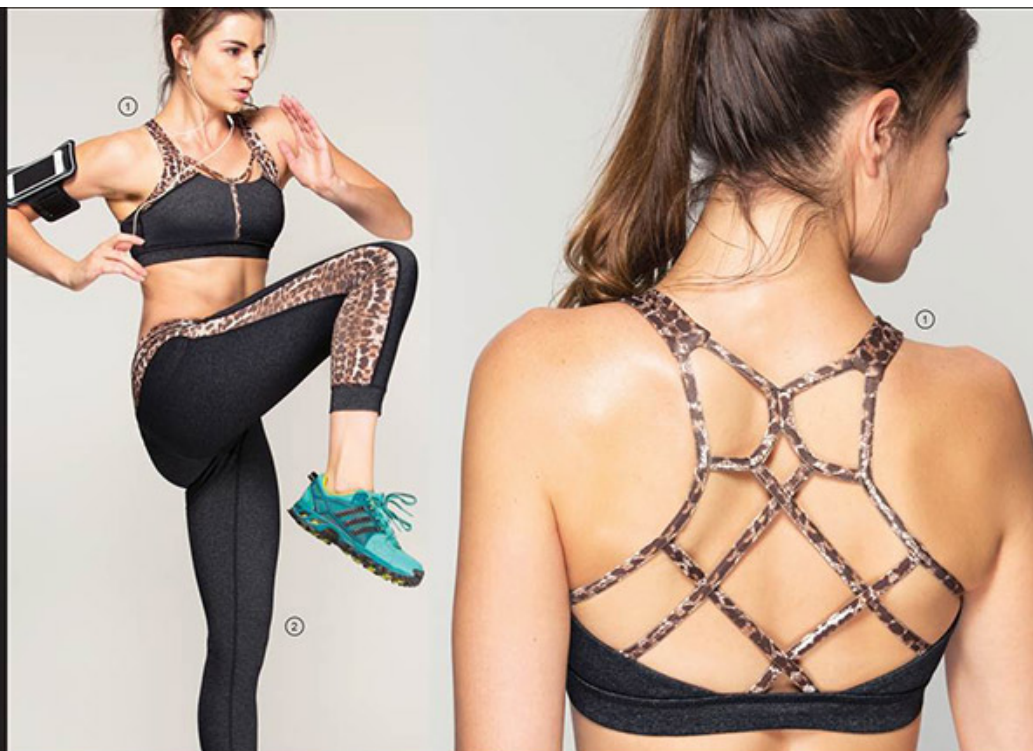
Fabric 2:  
87% NYLON  
13% SPANDEX

**2. MADISON MOTION STANDOUT PANT - AL0012**

Leopard print band and tapered side design. Marl gray fabric for balance. Looped drawstring at waist. Convenient hidden waistband pocket for credit card or keys at the front. A myriad of flat lock seams lend design and comfort to the style. Stitched ankle cuffs. Motion reflective logo on back.

Fabric 1:  
87% POLYESTER  
13% SPANDEX

Fabric 2:  
87% NYLON  
13% SPANDEX



**1. KATIE MOTION STANDOUT SPORTS BRA - AB0008**

Moderate Intensity

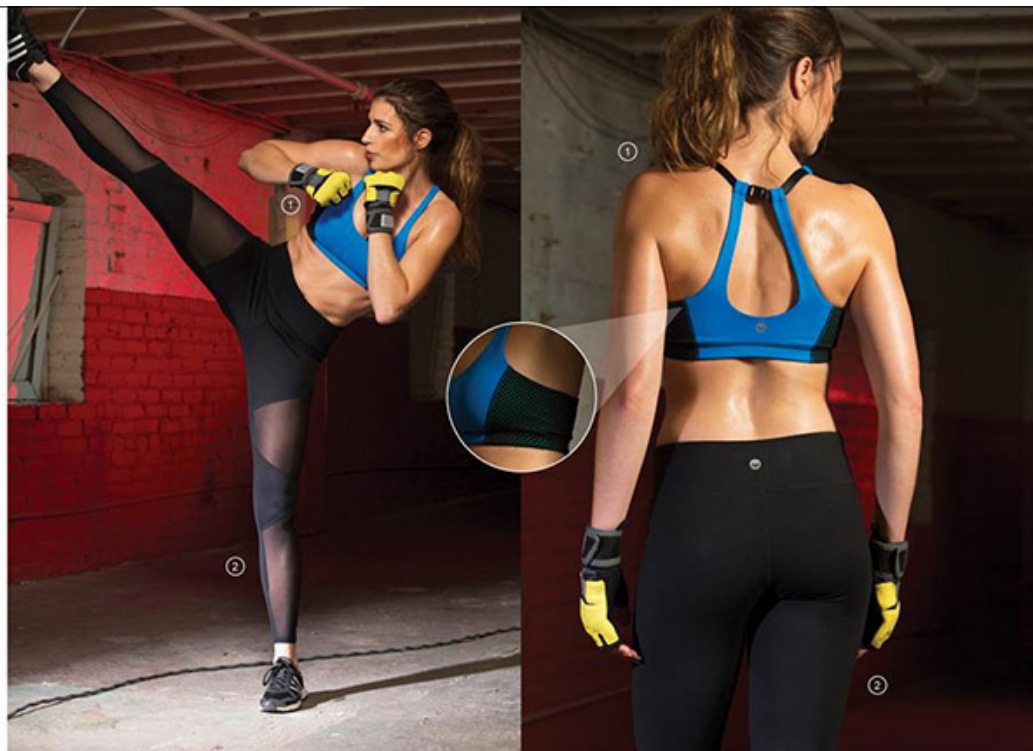
Peek-a-boo mesh sides with a pop of contrast color. Soft gray lining. Snap closures at the neck for easy changing. Split-strap adjustable t-back. Elastic expansion at straps for comfort. Removable padded cups. Motion reflective logo on back.

87% NYLON  
13% SPANDEX

**2. PIPER MOTION STANDOUT PANT - AL0006**

Wide mesh outs at the front for a sexy reveal. Full-length fit. Shurly elastic band for support. Convenient hidden waistband pocket for credit card or keys at the front. Flat lock seams for comfort and durability. Motion reflective logo on back.

87% NYLON  
13% SPANDEX





1

**1. JANA MOTION STANDOUT PANT - AL0010**

Pink sunset leopard print band. Flat lock seams for comfort and durability. Subtle v-dip at the back for a flattering shape. Motion reflective logo on left ankle.

87% NYLON  
13% SPANDEX

**2. ANNE MOTION CLASSIC SPORTS BRA - AB0010**

Low Intensity.

Thin straps. Adjustable hardware for a customized fit. Hourglass-reveal back design. Spaced seam front design. Soft gray lining. Removable padded cups. Motion reflective logo on back.

87% NYLON  
13% SPANDEX



2



