

BRANDMODELS

ANNA EASTEDEN

HAIR: RED
EYES: BLUE
HEIGHT: 5' 7"
CHEST: 34C
WAIST: 26
HIPS: 37
DRESS: 4
SHOE: 7































ORDINARY LIVING FOR EXTRAORDINARY LIVES

LUXURY

LAS VEGAS

Phenomenal
FALL FASHION

Plus...

*MonteLago Village Dining,
Chatting with Rita Rudner &
Navigating the Grand Canal Shoppes*

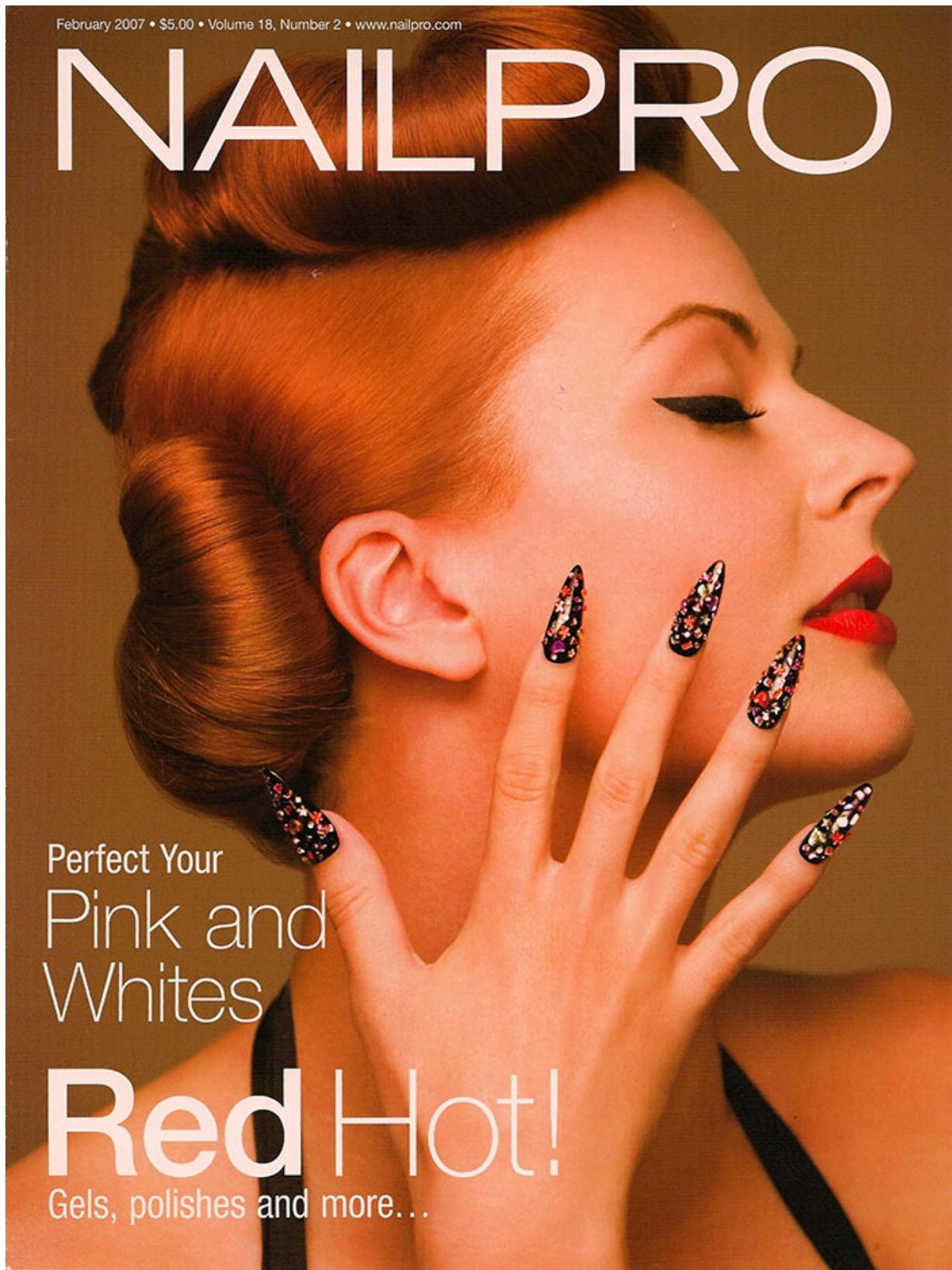
February 2007 • \$5.00 • Volume 18, Number 2 • www.nailpro.com

NAILPRO

Perfect Your
Pink and
Whites

Red Hot!

Gels, polishes and more...



LAS VEGAS LIFE

GROWING A
DESERT VEGGIE
GARDEN PG 28

NEVADA'S NEXT
CITY: COYOTE
SPRINGS PG 68

GET TO KNOW
DANA AND KIM
WAGNER PG 31

LAS VEGAS LIFE LVL

SPRING AND
SUMMER
FASHION PG 60

BATALI'S
CARNEVINO AT
PALAZZO PG 90

GYROTONICS:
THE LATEST WAY
TO GET FIT PG 34

Go Green!

APRIL 2008

April 2008 \$3.99



0 71896 44176 04



KENRA
COLOR®



DESERT
SUNSET



SEEING RED

The Next Leading Lady

The starlet enchanted the crowd with her flaming tresses, as she posed like a true leading lady. The paparazzi began to shout her name but she kept her composure and we instantly knew that right in front of our eyes, a star was born.















All Rights Reserved - Anna Easteden and Jagger (c) Isabelle Ruen















