

# BRANDMODELS

## TRADELL HAWK

HAIR: BLACK  
EYES: BROWN  
HEIGHT: 6' 1"  
INSEAM: 32  
WAIST: 32  
SHIRT: 16  
SUIT: 40R  
SHOE: 11.5

# LOCKIT DOWN

STRADDLING A STYLISH LINE BETWEEN SMART AND CASUAL, WITH JUST THE RIGHT AMOUNT OF COMFORT AND SWAGGER, THE PUFFER JACKET IS FAST BECOMING AN ICONIC COOL-WEATHER STAPLE. IT'S TIME TO GET PUFFED UP

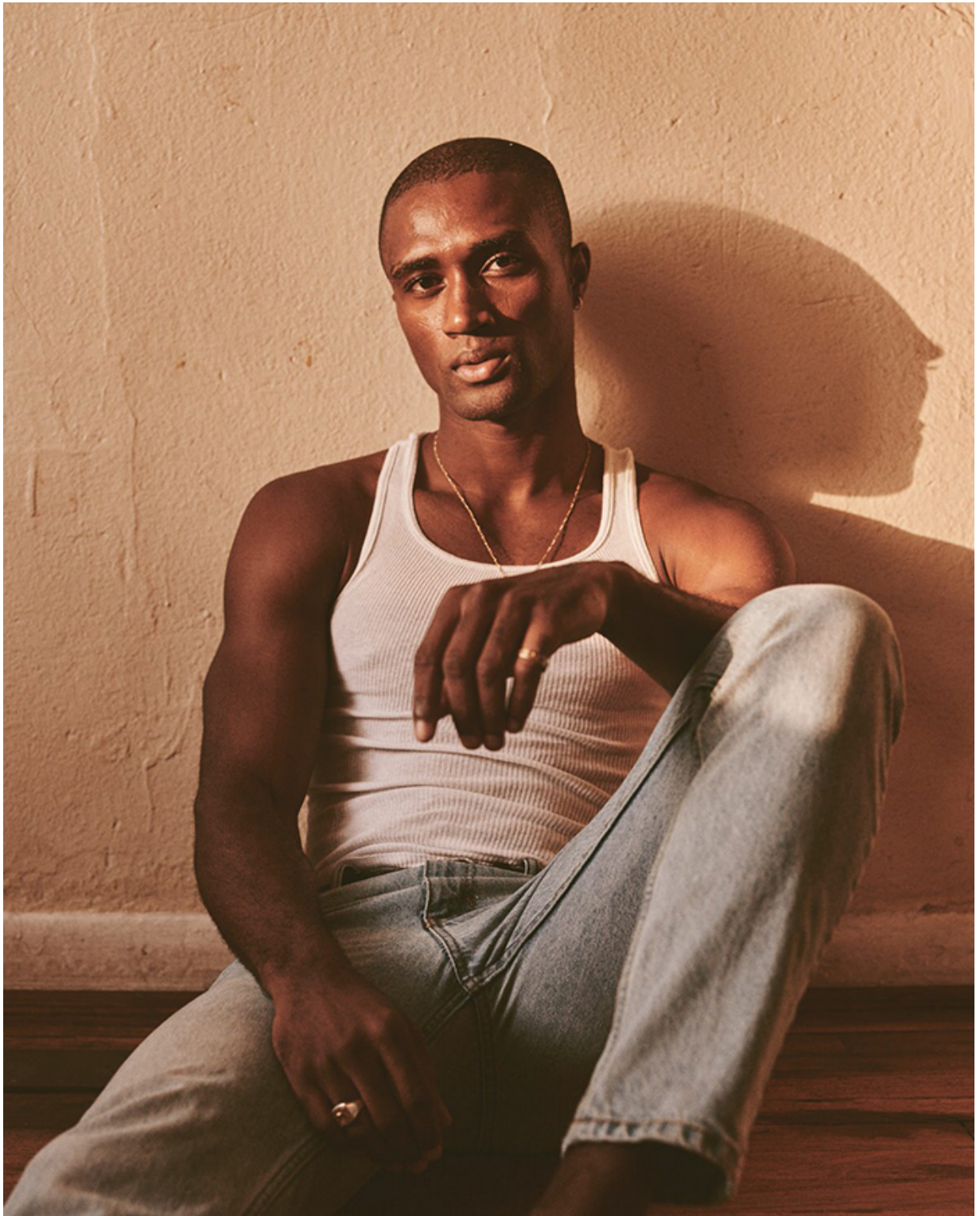
AUTUMN 2017

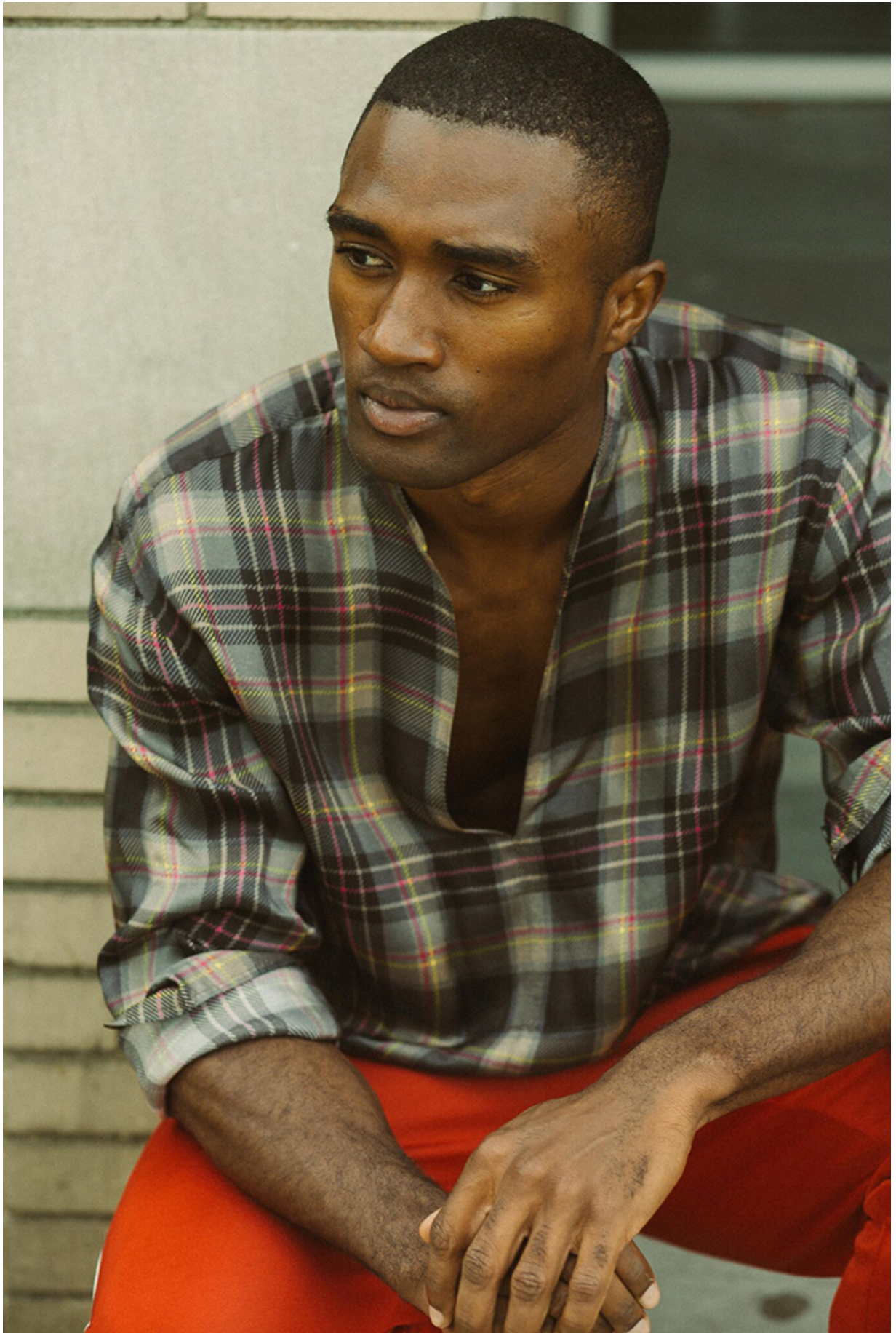
### MAKE THE CUT

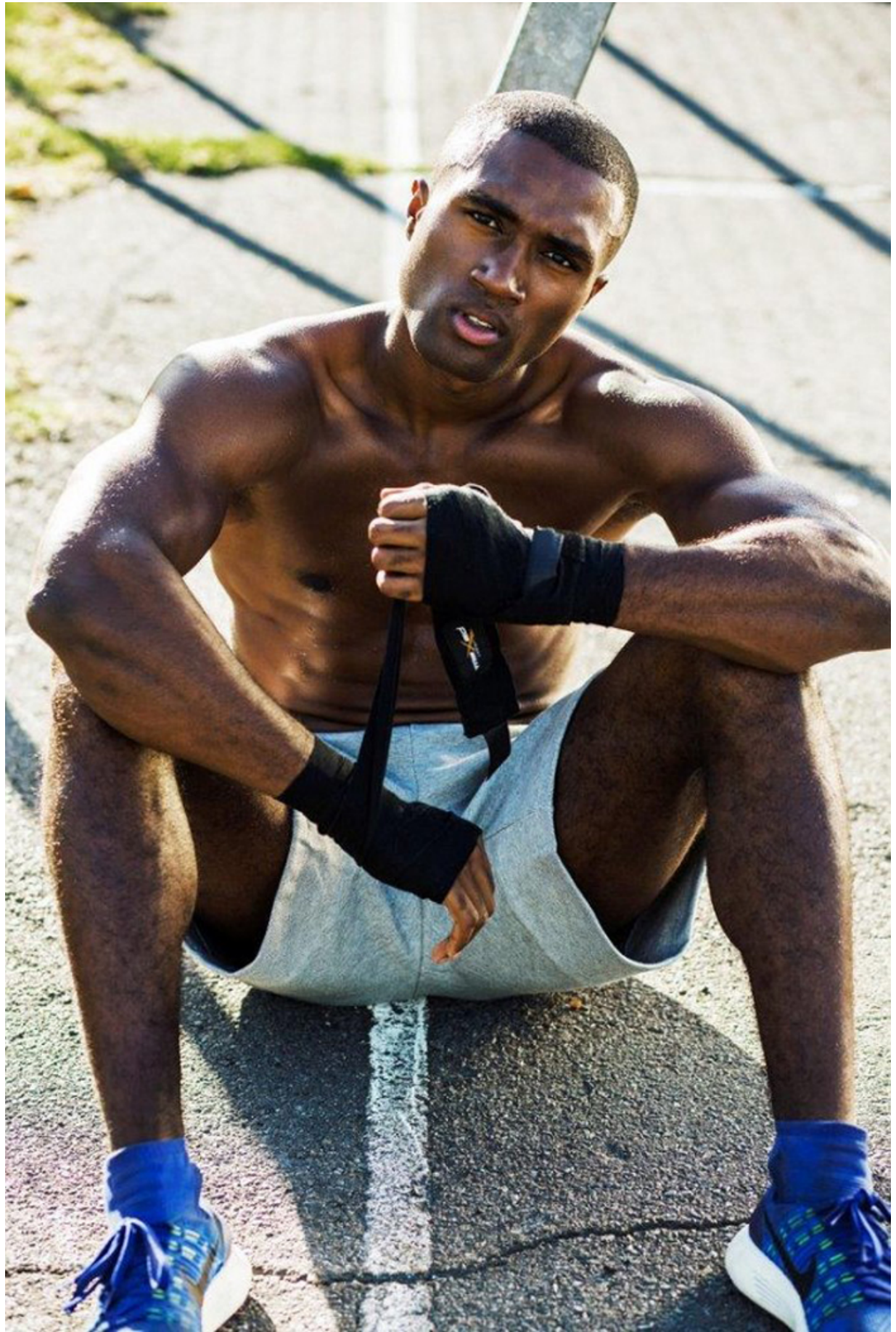
If you associate puffers with cold, early-morning treks to the trail or the train, think again: the right one will make an impression in the office, too. A quilt in a luxurious texture works well layered under a blazer, keeping you warm and helping you stand out in a sea of soulless suits.

SUIT JACKET \$3 699 (WITH PANTS) PIERRE CARON AND POCKET SQUARE \$48 EDITED BOYS SHIRT GILEY \$29 TASSI SHIRT \$699 DICKIES TIE \$223 TERPMAN WATCH \$2 650 BRAUN AT CASH OPTICALS TROUSERS \$99 ZARA WOVEN BELT \$223 H&M

FASHION EDITOR  
ALEXZ JACOBS  
PHOTOGRAPHS  
JACQUES WEYERS









## COVER UP

With the built-in insulation of their down filling, puffers are a winter staple. Another warming option: quilting, or the practice of sewing two or more layers of fabric together to make a thicker padding. This can tone down the fullness of a puffer jacket, while making it versatile enough to wear as a top or bottom layer. Bonus: this one's waterproof.

SUNGLASSES R2 300 RAY-BAN AT L'UOZITICA  
TRANSIT JACKET R2 199 FIRST ASCENT  
HUDSON INRIGO TOP R2 95 G STAR RAW  
SHERMAN WATERS R2 400 HUNTSVILLE  
AT CUB GIFT SALES TOKYO APEX CHINOS  
R2 299 DENHAM AT INFINITE 60 BOOTS  
R4 699 G STAR RAW

## TO ATTENTION

The bomber-style silhouette adds a masculine, military-esque edge to your wardrobe. If you're unsure about olive green, don't be: it goes well with most neutral colours, like grey or black, and suits a pair of jeans or chinos, so will slot seamlessly into your wardrobe.

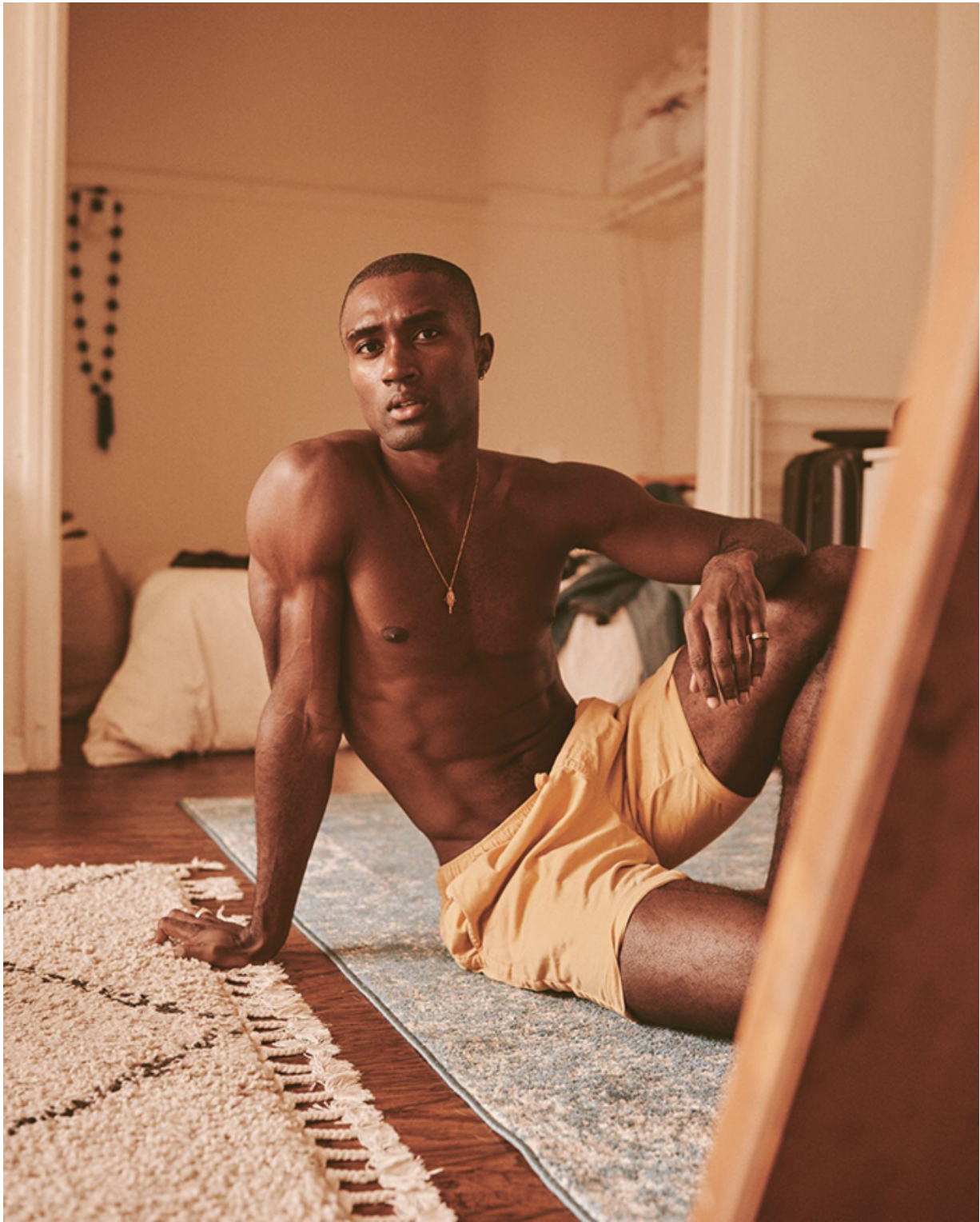
INDIANA SUNGLASSES R6 877 TOM FORD  
AT SIM EYEWEAR JACKET R5 180 ANTONY  
MARIATO CLOTHING & COUNTRY SHIRT R480  
OLD KHAKI TIE R248 ENTED AT SPRIG DIVE  
WATCH R14 600 GUCCI AT PICOT & MOSS  
HYPERFLEX JEANS R4 400 REPLAY  
HI-TOPS R1 795 CARVELLA AT SPITZ



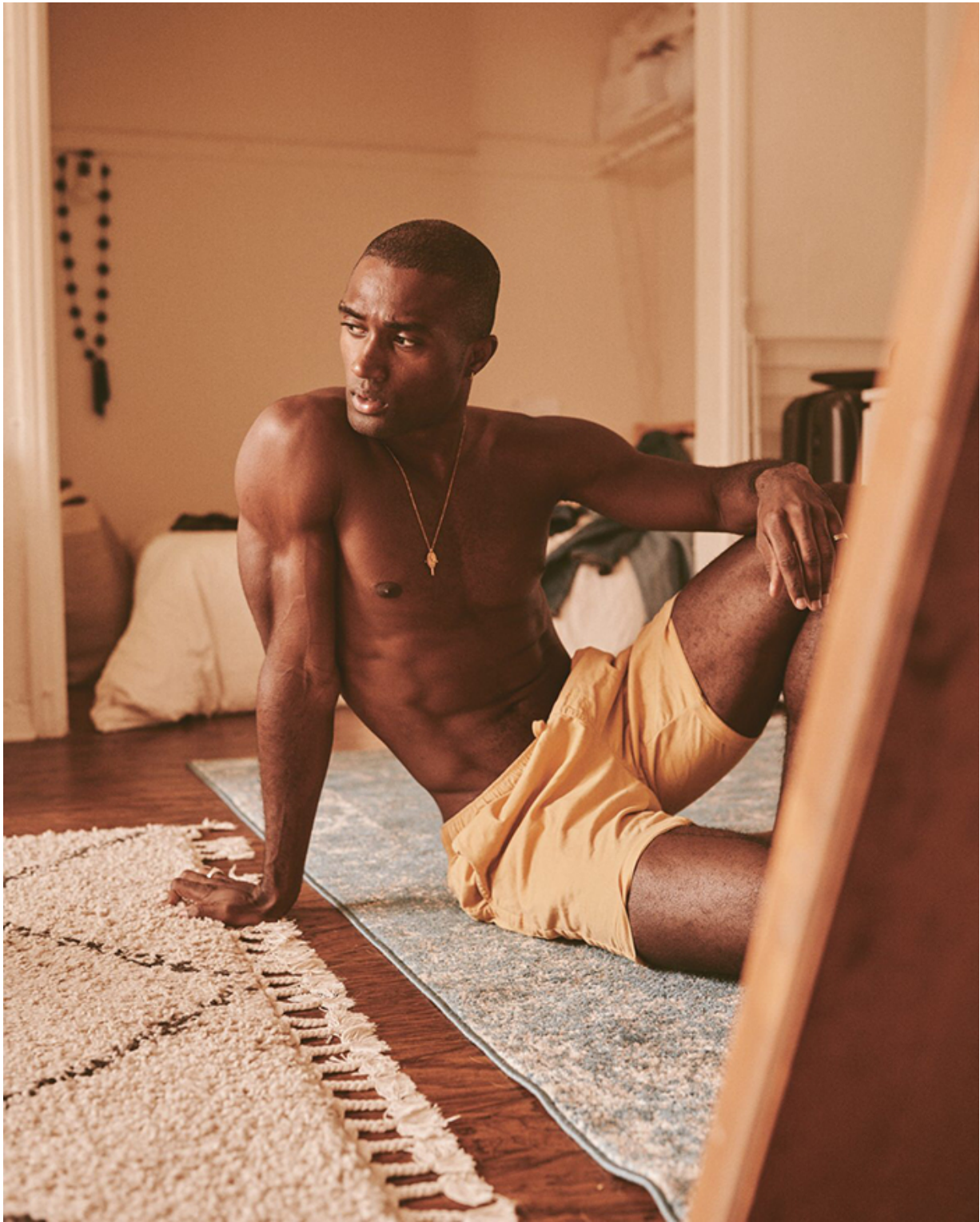
## CLIMB THE RANKS

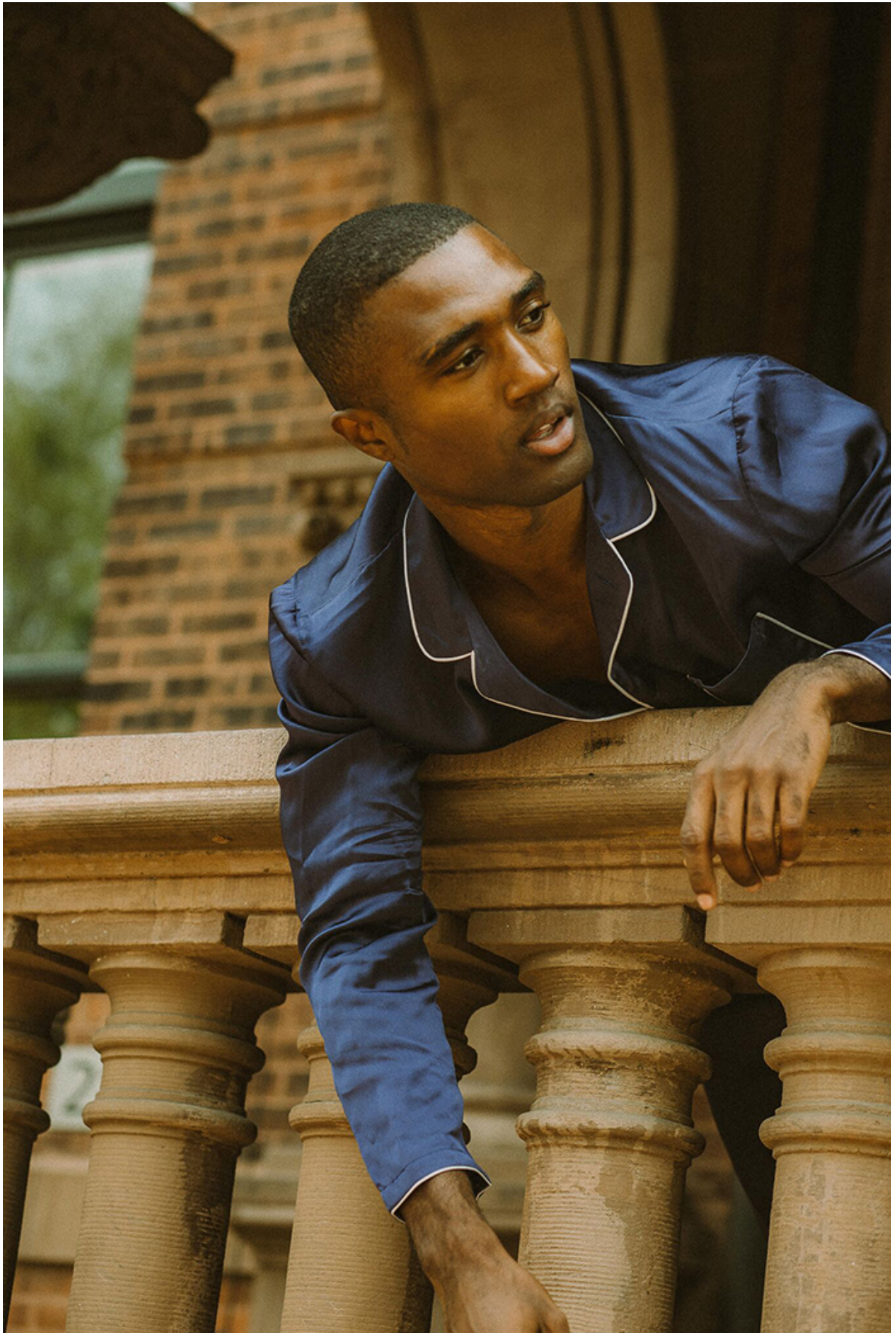
Store racks used to be stacked with black – now, you can find puffers like these: interesting, more refined, and not so puffy. Plus, they have a matte finish and ultra-light fabric. Green-on-green brings some crucial detail, but stay away from cargo pants – flannel or denim is a smarter approach.

SLADE PUFFER R1 295 OLD KHAKI DUKONO  
SLUB SWEATSHIRT R1 999 G-STAR RAW  
CHAMBRAY SHIRT R379 H&M CLASSIC  
OXFORD WATCH R3 460 DANIEL WELLINGTON  
AT TRESSER BRANDS WOOL TROUSERS  
R2 899 SCOTCH & SODA

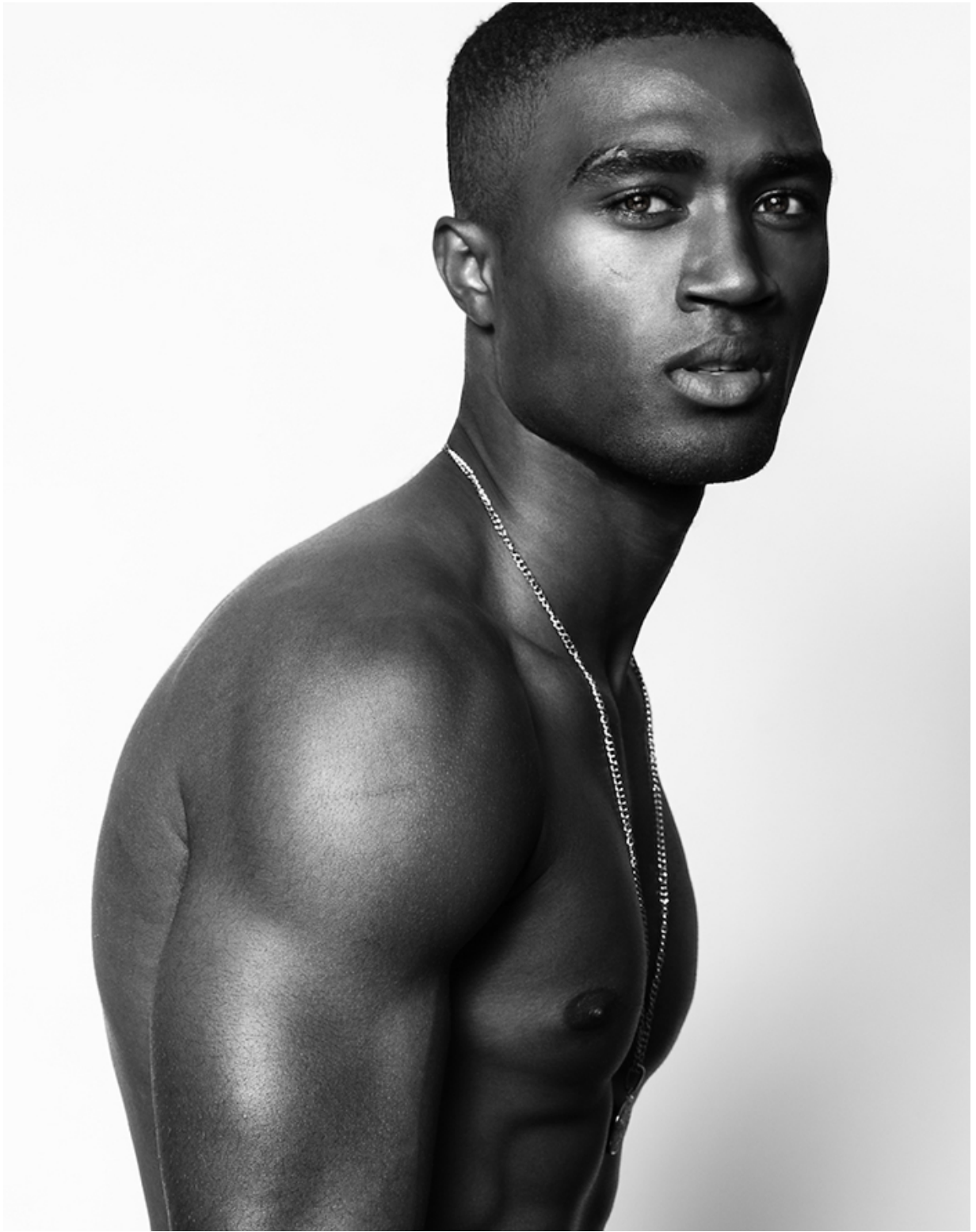














TURN UP  
YOUR  
COLOUR

“Doubling down on denim? Good call. A bold gilet spices up the look, acting as the fresh focal point of a subtle, smart outfit. Too stuffy? Keep the bottom layers buttoned, and leave the puffer unzipped.”

**GILET** R639 240A DENIM JACKET R4 300  
**REPLAY PARACORD SWISS ARMY WATCH** R3 895  
**VICTORINOX AT PICO & MOSS JEANS** R2 499  
**DENHAM AT INFINITE 60 BOOTS** R4 499 © STAR RAW

