

# BRANDMODELS

## KELLY DOWDLE

HAIR: BLONDE

EYES: BLUE

HEIGHT: 5' 9"

CHEST: 34C

WAIST: 26

HIPS: 35

DRESS: 4

SHOE: 9











































































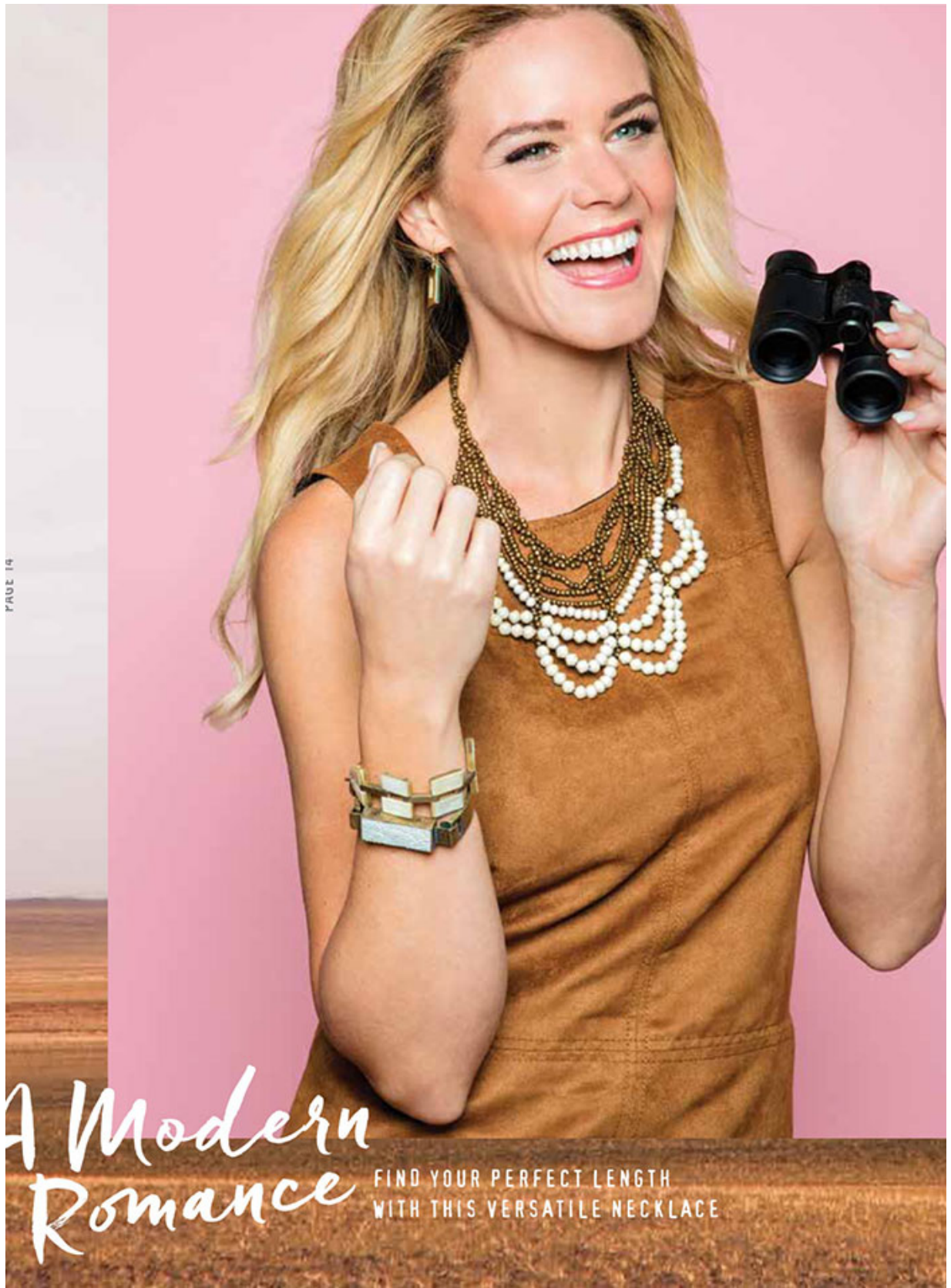












# A Modern Romance

FIND YOUR PERFECT LENGTH  
WITH THIS VERSATILE NECKLACE







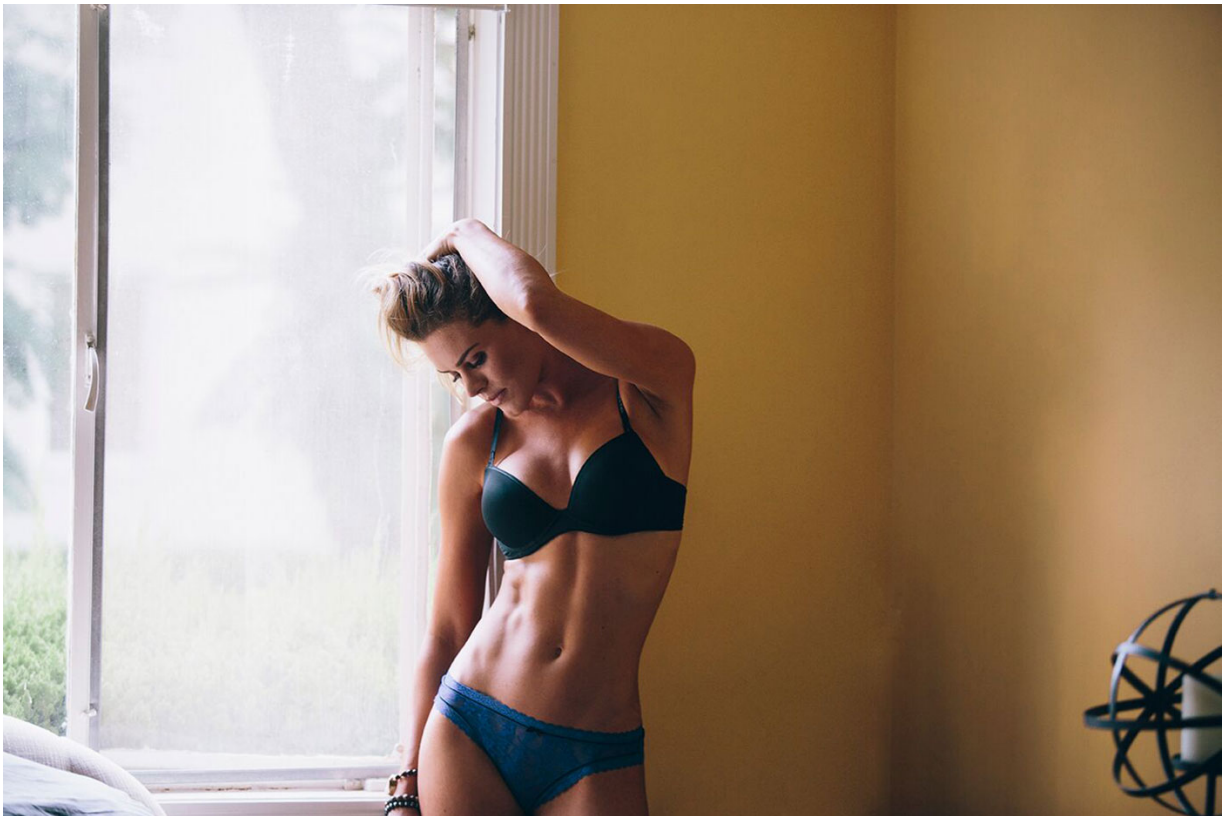


















## *Handmade in Haiti*

THE MERIDIAN CLUTCH IS DESIGNED FOR THE GIRL ON THE GO

---

---

# Through the looking glass

ELEGANT STYLES FEATURING HANDCRAFTED GLASSWORK



- NEW!** **A** SIREN SONG NECKLACE India, Handcrafted Glass Beads, Mixed Metal, 30"L, 3"L Extender Chain, NE255TA \$58
- B** EVERLAST BANGLES India, Glass Seed Beads, Mixed Metal, 2.75" Diameter, BR141CF \$30
- C** GLASSWORK EARRINGS Peru, Hand Cut Glass, Brass, 1.75"L, .5"W, EA162FE \$78























































