

BRANDMODELS

GABE WITMER

HAIR: LIGHT BROWN

EYES: BLUE/GREEN

HEIGHT: 6' 0"

INSEAM: 32

WAIST: 32

SHIRT: 15.5X34

SUIT: 40R

SHOE: 11













POLO





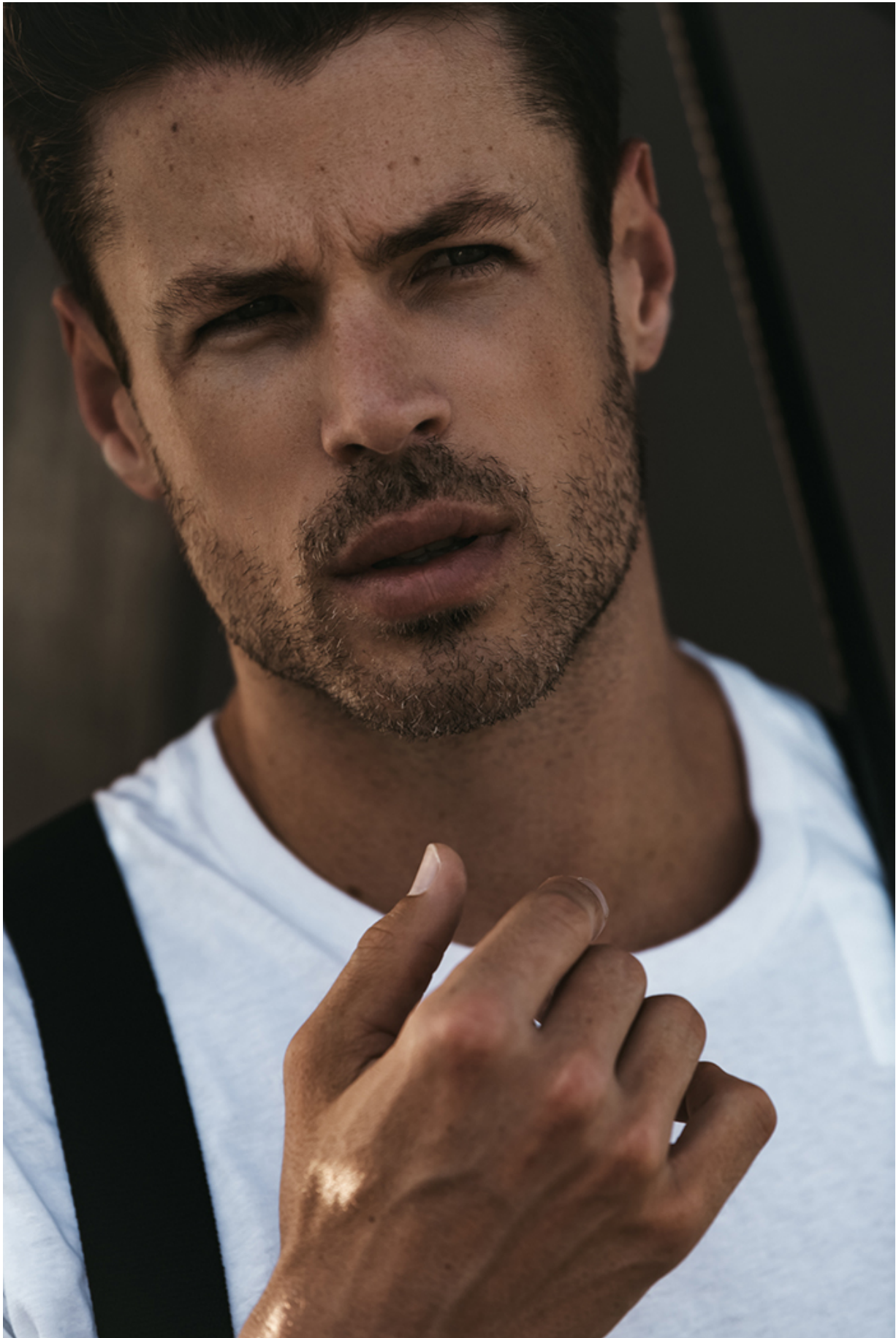
















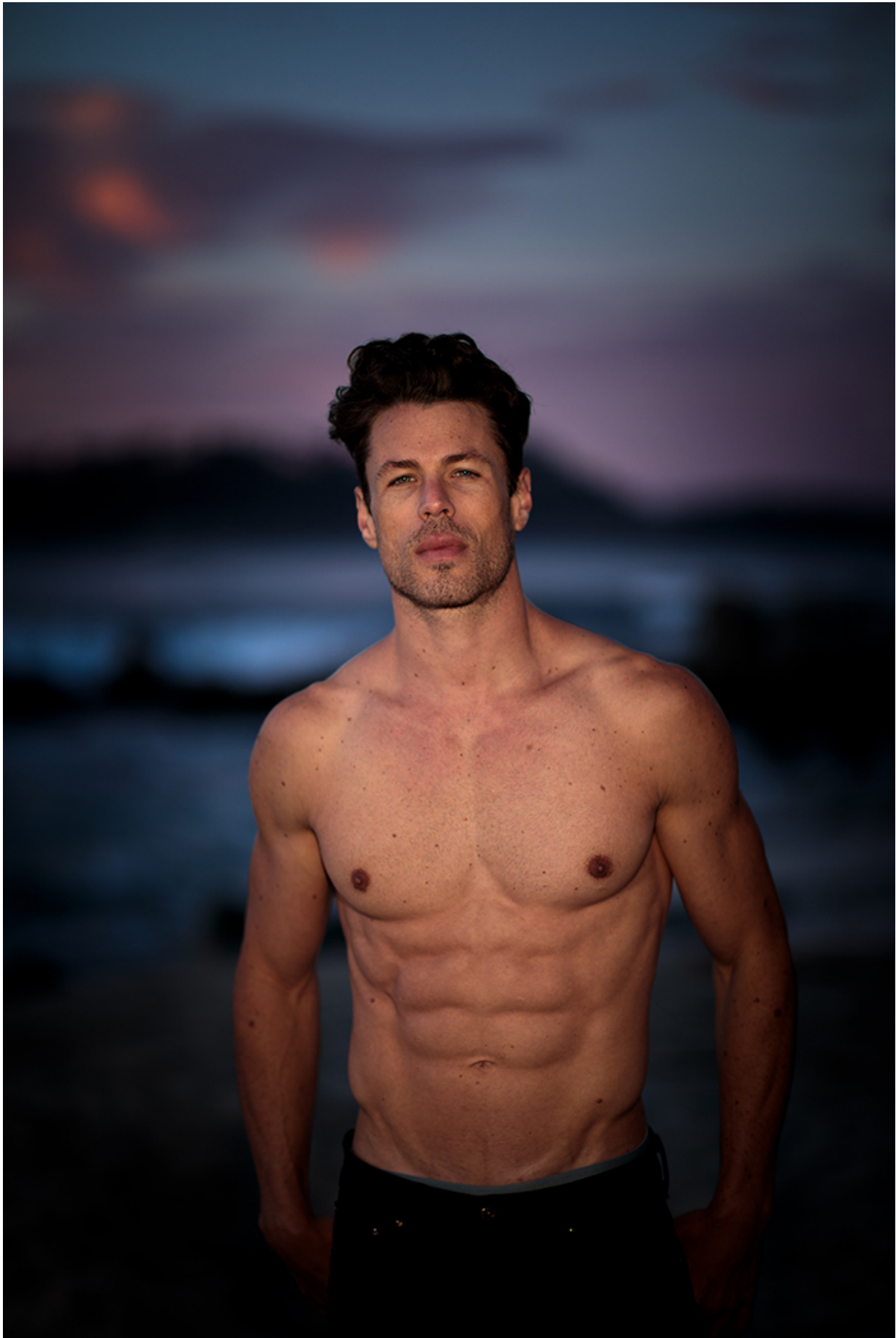




Jacket: \$175
 Scarf: \$25
 Pants: \$120
 Shoes: \$100
 Location: City Center
 Jacket: \$175
 Scarf: \$25
 Pants: \$120
 Shoes: \$100
 Location: City Center



Jacket: \$175
 T-shirt: \$15
 Pants: \$120
 Shoes: \$100
 Location: City Center













M
MIZZEN+MAIN
— Tradition. Evolved. —

