

BRANDMODELS

ALEX BOLDEA

HAIR: WHITE/GRAY

EYES: GREEN

HEIGHT: 5' 8"

CHEST: 32

WAIST: 25.5

HIPS: 36

DRESS: 2

SHOE: 7.5





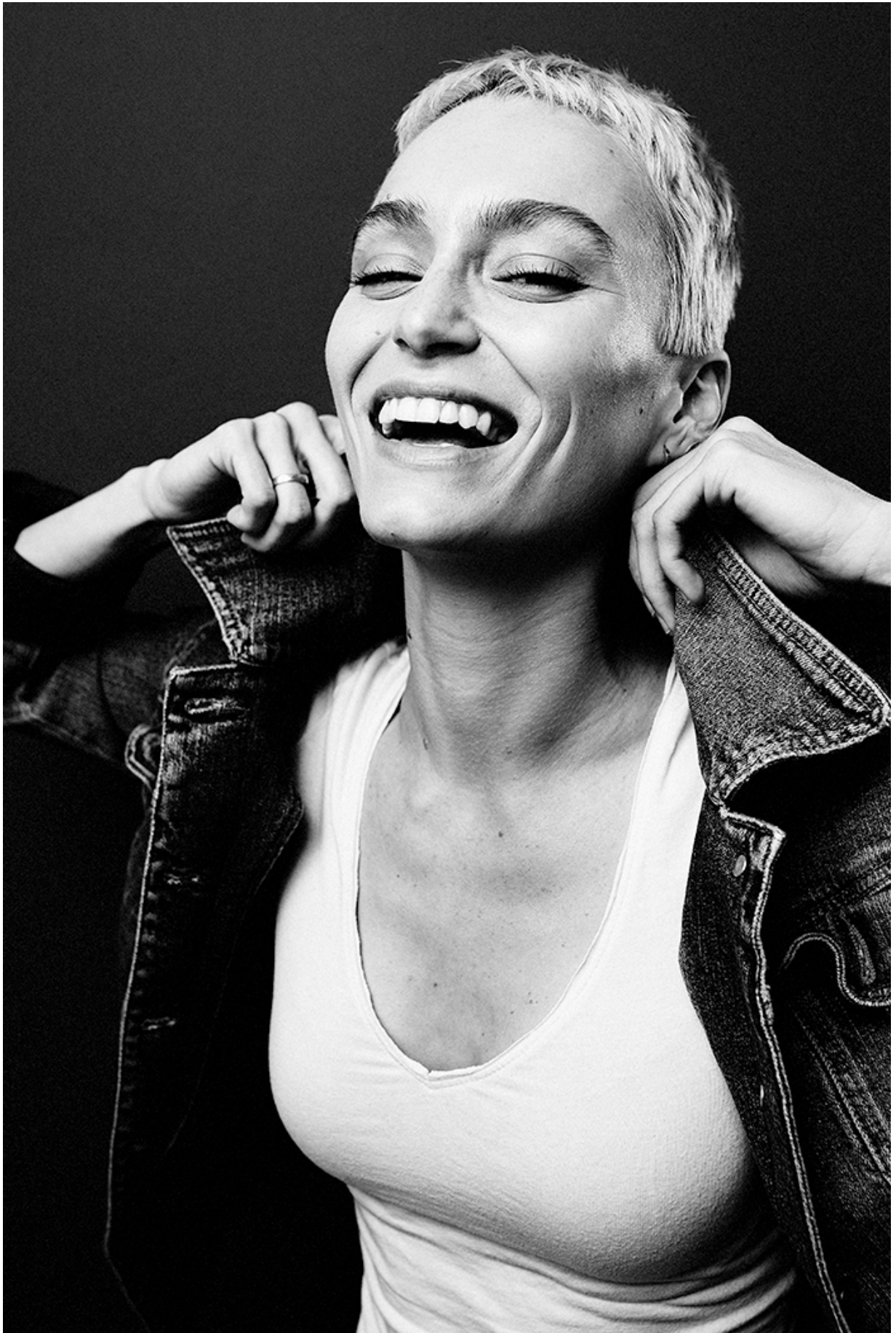














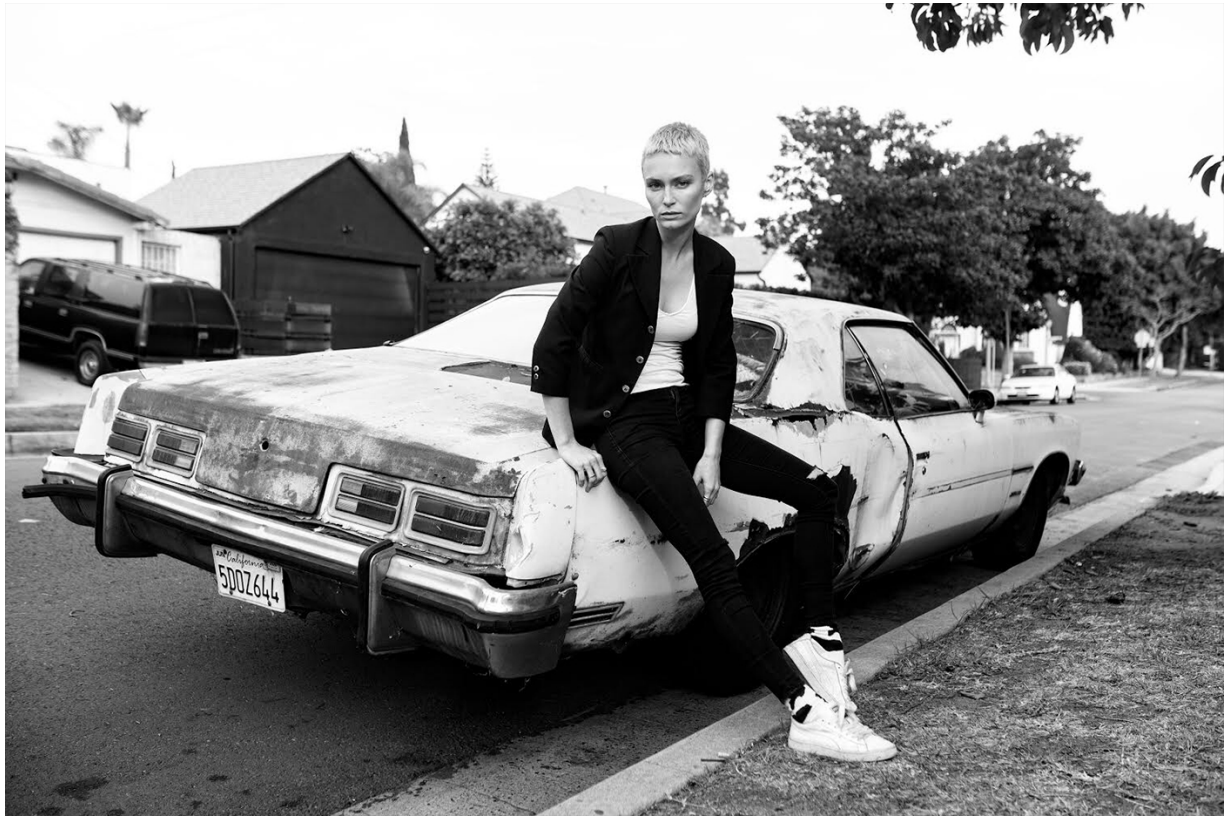


















**SNAP DECISIONS: A PARTY
NEXT WEEKEND!**

Smart gals leave the planning to the experts, so they'll practically be guests at their own party. Dictate your wishlist to Nick Oxborrow, Director of Fabulation and the go-to person for all luxury events and parties. He cites his training in Switzerland, the land of hospitality, as quality assurance. Don't like the flowers? He'll personally get you fresher ones. Need a VIP guest list? A celebrity performer? A venue for 2,000 guests? His team of reliable executives has you covered.

Silk dress with sequins and metal rings with crystals, **Gucci.**

Oxborrow's outfit, his own.

6 DAYS TO THE PARTY

Rummage through your personal stash of jewellery to find and rediscover the stunning heirloom pieces you forgot you owned. Otherwise, shop on.

Lybra bikini top,
Michael Kors Collection.
Bouton d'or necklace,
bracelet, earrings
and ring in pink gold
with mother-of-pearl
and carnelian,
Van Cleef & Arpels.

