

BRANDMODELS

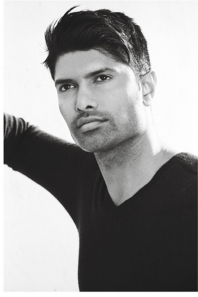
ANDREW GOVENDER

HAIR: BLACK
EYES: BROWN
HEIGHT: 6' 0"
INSEAM: -
WAIST: 32
SHIRT: M
SUIT: -
SHOE: 9









BIZ-3619 NEW YORKER LONG SLEEVE SHIRT LADIES
 65% Polyester 35% cotton / 65% algodão 35% algodão / cor-de-rosa
 stripes with satin dobby / buttoned placket / collar / curved hemline / 01 - 036

BIZ-3621 NEW YORKER LONG SLEEVE SHIRT MENS
 65% Polyester 35% cotton / 65% algodão 35% algodão / cor-de-rosa
 stripes with satin dobby / 2 back shoulder pleats standard collar with
 bonded pocket / curved hemline / can be worn in or out / 01 - 402

BIZ-3619 & BIZ-3621 BOTH AVAILABLE IN THESE COLOURS

| HALF CHEST (CM) STANDARD FIT | | | | | HALF CHEST (CM) STANDARD FIT | | | | |
|------------------------------|----|----|------|-----|------------------------------|----|----|----|-----|
| S | M | L | XL | XXL | S | M | L | XL | XXL |
| 48.5 | 51 | 54 | 56.5 | 59 | 65.5 | 68 | 71 | 74 | 77 |

