

# BRANDMODELS

## JANINE CHUA

HAIR: DARK BROWN

EYES: BROWN

HEIGHT: 5' 5"

CHEST: 32A

WAIST: 23

HIPS: 33.5

DRESS: 0

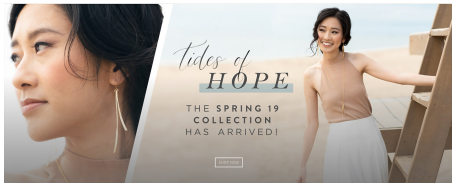
SHOE: 7















ETHOS

WHY ETHOSABOUT USFAQSIGN IN

GET MY QUOTE

# Life insurance? But I'm healthy.

Ironically, most is when you need life insurance the most. If something happens during your prime earning years, your loved ones don't just lose you—they also lose the financial future you're building for them. Getting term life insurance makes sure that your future is safe no matter what.

A woman with long, dark hair is smiling and standing next to a yellow bicycle. She is wearing a light purple long-sleeved shirt and green pants. The background is a grassy field with trees.

